

7058

INDEX

SHEET NO. 1	TITLE SHEET & INDEX
" 2	KEY PLAN & BORING LOCATIONS
" 3	BORING DATA
" 4	TYPICAL SECTIONS
" 5	PLAN - TEMP DETOUR ROAD
" 6	PLAN RELOC. ROUTE I-A STA. 0+45 TO STA. 5+00, RAMP "D"
" 7	" " STA. 5+00 TO STA. 10+00, RAMP "A" STA. 40+24 TO STA. 42+30, RAMP "B" STA. 38+19 TO STA. 42+57, RAMP "C", BUS STATION
" 8	PLAN RAMP "A" STA. 42+30 TO STA. 45+84, RAMP "B" STA. 42+57 TO STA. 45+84
" 9	PLAN RELOC. ROUTE I-A STA. 10+00 TO STA. 13+00, RAMPS "A" & "B" STA. 45+84 TO STA. 50+00.32
" 10	" " STA. 13+00 TO STA. 18+90.14, ROUTE I-A STA. 19+21.06 TO STA. 19+53
" 11	PROFILE RELOC. ROUTE I-A
" 12	" " RAMPS "A" & "B"
" 13-17	PLANS-GRADING, DRAINAGE
" 18	LIGHTING & SIGN LOCATIONS
" 19-20	SIGN DETAILS, PAVEMENT MARKINGS & BUS STOP SHELTER
" 21-22	LIGHTING AND CONSTRUCTION DETAILS
" 23	PLAN & DETAILS - BASEBALL PARK
" 24-34	BRIDGE NO. R-5-54 RELOC. RTE. IA OVER RAMPS "A" & "B"
" 35-48	CROSS SECTIONS RELOC. RTE. I-A
" 49	" " RAMP "A"
" 50	" " RAMP "B"
" 51-53	" " RAMPS "A" & "B"
" 54	" " & PROFILE - DRIVEWAY AT RAMP "A" & LYNNWAY
" 55-63	" " TEMPORARY DETOUR ROAD

THE COMMONWEALTH OF MASSACHUSETTS
 DEPARTMENT OF PUBLIC WORKS
 PLAN & PROFILE OF
STATE HIGHWAY
 IN THE CITY OF
REVERE
SUFFOLK COUNTY
 FEDERAL AID PROJECT
 U.S. - 153(3)

REVERE ROUTE-IA

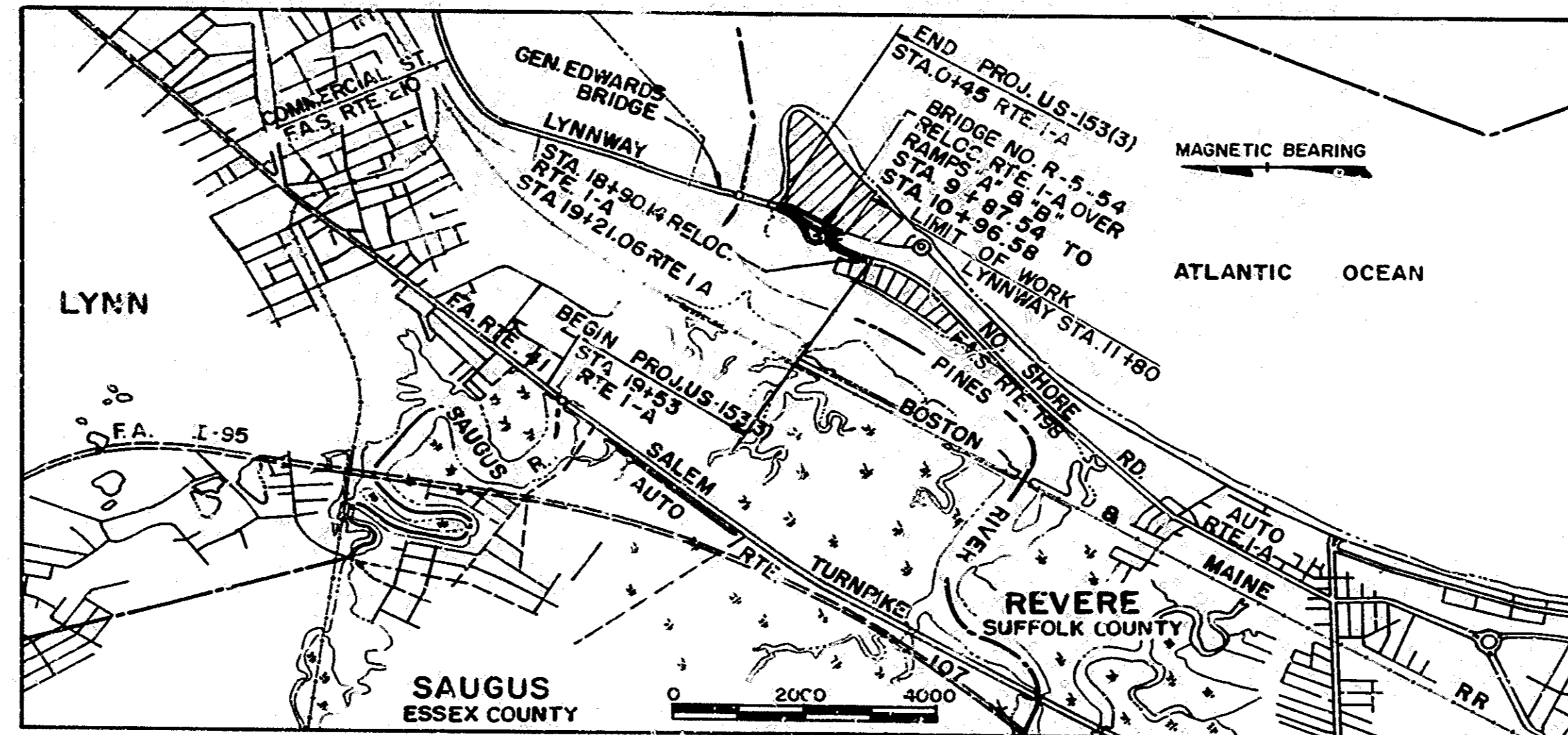
PUB. PD. DIV. NO.	STATE	FED. AID PROJ. NO.	FISCAL YEAR	SHEET NO.	TOTAL SHEETS
1	MASS.	US-153(3)	197	1	5

TITLE SHEET AND INDEX

THE 1967 SPECIFICATIONS, THE 1966 CONSTRUCTION STANDARDS & THE 1961 MANUAL ON UNIFORM TRAFFIC CONTROL DEVICES FOR STREETS AND HIGHWAYS, WILL GOVERN.

DESIGN DESIGNATION

DESIGN SPEED 40 MPH
ADT (1968) = 21,300
ADT (1990) = 23,000
DHV = 2300
K = 10%
D = 70%
T (PK. HR.) = 02%
T (ADT) = 06%



SCALES
 SEE BAR SCALES
 CROSS SECTIONS 1" = 8'

CONVENTIONAL SIGNS

MAGNETIC BEARING	-----
COUNTY, CITY OR TOWN BOUNDARY LINE	-----
COUNTY, CITY OR TOWN SIDE LINE	-----
FENCE LINE	-----
SURVEY LINE	-----
CONSTRUCTION BASELINE OR SURV. BAS. LINE	S 36°-22' 17"
RIGHT OF WAY LINE	-----
CULVERTS	-----
PROP. SURFACE	-----
EXIST. SURFACE	-----
ELEVATIONS	-----
POLES	-----

RECOMMENDED FOR APPROVAL

[Signature] 6/15/71
 CHIEF ENGINEER DATE

APPROVED

COMMISSIONER OF PUBLIC WORKS

ASSOCIATE COMMISSIONERS

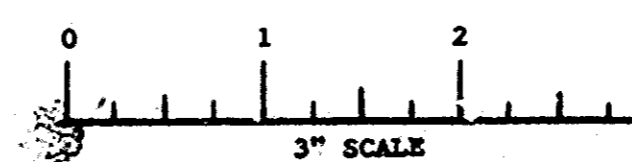
DEPARTMENT OF TRANSPORTATION
 FEDERAL HIGHWAY ADMINISTRATION
 APPROVED
 DIVISION ENGINEER DATE

BAYSIDE ENGINEERING ASSOCIATES INCORPORATED
 BOSTON, MASS.

[Signature]

NOTE

LENGTH OF PROJECT NO. U.S. 153(3) 1,877.08 FT. = 0.355 MILES R



DRAINAGE DETAILS
SEE SHEET NO.13
SEE BELOW

TRAFFIC SIGNAL CONDUIT
SEE SHEET NO.13
T-T

STEEL BEAM HIGHWAY GUARD TYPE SS
DOUBLE FACED W/ 36" CHAIN LINK FENCE
STA. 1+25 TO STA. 2+74 RELOC. RTE. I-A
STA. 3+10 TO STA. 4+00 RELOC. RTE. I-A

STEEL BEAM HIGHWAY GUARD TYPE SS
DOUBLE FACED
STA. 4+00 TO STA. 9+87 RELOC. RTE. I-A

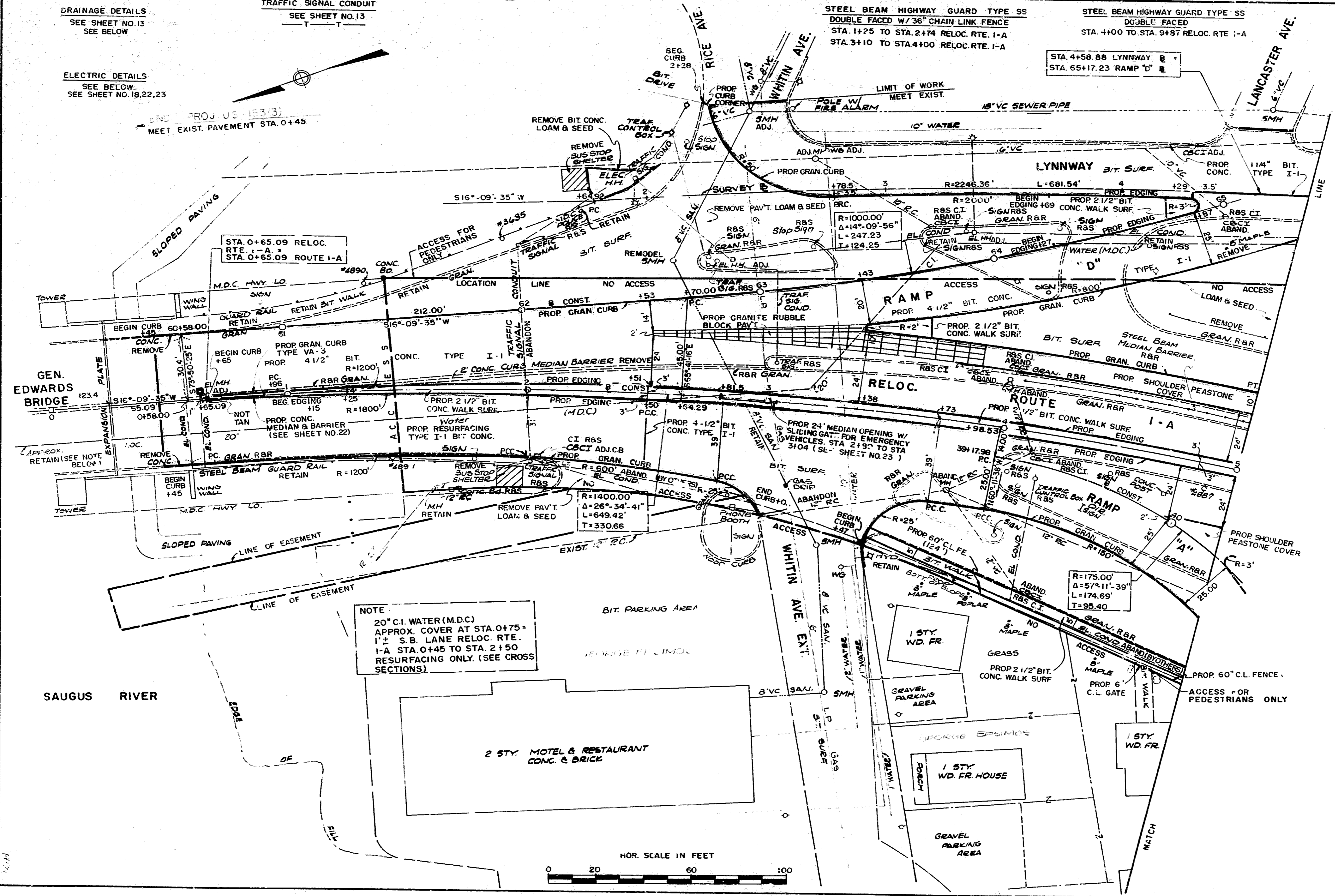
REVERSE ROUTE -1A

DIST. NO.	STATE	FED. AID PROJ. NO.	FISCAL YEAR	SHEET NO.	TOTAL SHEETS
1	MASS.	S-153 (3)	197	6	6

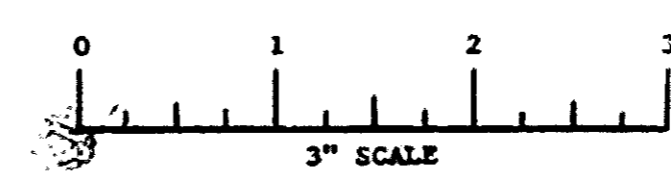
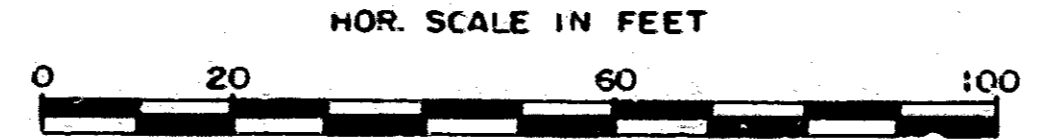
7057

ELECTRIC DETAILS
SEE BELOW
SEE SHEET NO. 18, 22, 23

END PROJ US 153.3)
MEET EXIST. PAVEMENT STA. 0+45



NOTE:
20" C.I. WATER (M.D.C.)
APPROX. COVER AT STA. 0+75 =
1'± S.B. LANE RELOC. RTE.
I-A STA. 0+45 TO STA. 2+50
RESURFACING ONLY. (SEE CROSS
SECTIONS)



CONT. ON SHT. NO. 7

FOR PROFILE SEE SHEET NO. 11, 12

DRAINAGE DETAILS
SEE SHEET NO 14
SEE BELOW

STEEL BEAM HIGHWAY GUARD TYPE SS
DOUBLE FACED
STA. 4+10 TO STA. 9+87 RELOC. RTE. 1-A

STEEL BEAM HIGHWAY GUARD TYPE SS
SINGLE FACED
STA. 7+00 LT. TO STA. 9+76 LT. RELOC. RTE. 1-A
STA. 4+12 LT. RAMP "B" TO STA. 9+23 RT. RELOC.
RTE. 1-A 35.

ELECTRICAL DETAILS
SEE BELOW
SEE SHEET NO. 18, 22, 23

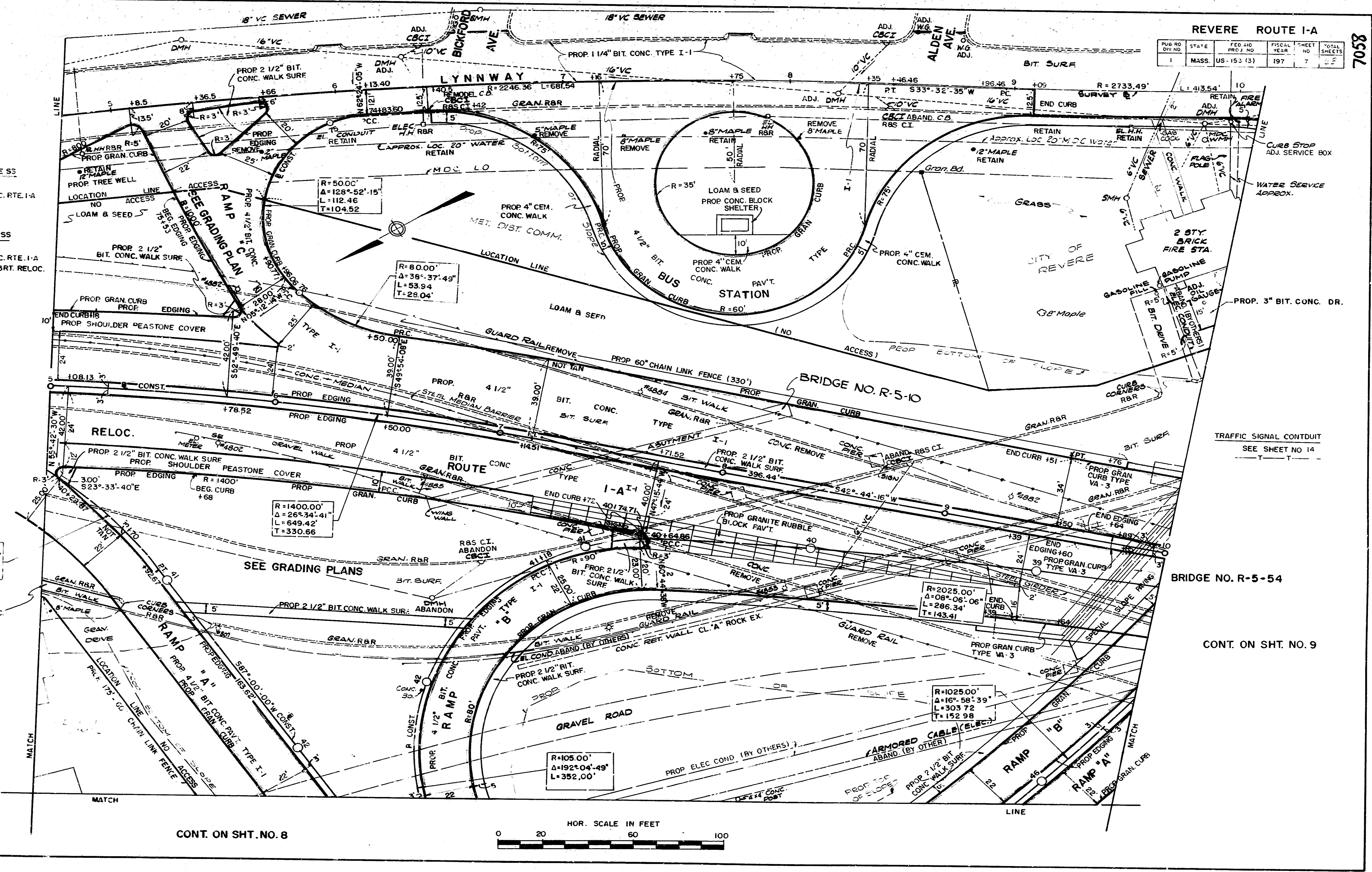
CONT. ON SHT. NO. 6

CONT. ON SHT. NO. 8

REVERSE ROUTE I-A

PUB. NO.	STATE	FED. AID PROJ. NO.	FISCAL YEAR	SHEET NO.	TOTAL SHEETS
1	MASS.	US-153(13)	197	7	25

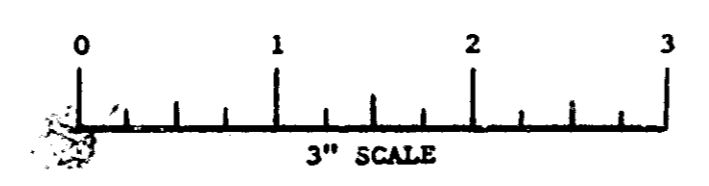
7058



TRAFFIC SIGNAL CONDUIT
SEE SHEET NO 14

CONT. ON SHT. NO. 9

FOR PROFILE SEE SHEET NO. 11, 12



DRAINAGE DETAILS
SEE SHEET NO.16

CONT. ON SHT. NO. 7 & 8

REVERE ROUTE I-A

PUB. NO.	STATE	FED. AID PROJ. NO.	FISCAL YEAR	SHEET NO.	TOTAL SHEETS
1	MASS.	US-157(13)	197	9	5

STEEL BEAM HIGHWAY GUARD TYPE SS
SINGLE FACED
STA. 11+06 RT. RELOC. RTE. I-A SB TO STA. 17+50
STA. 11+46 LT. RELOC. RTE. I-A NB TO STA. 17+00

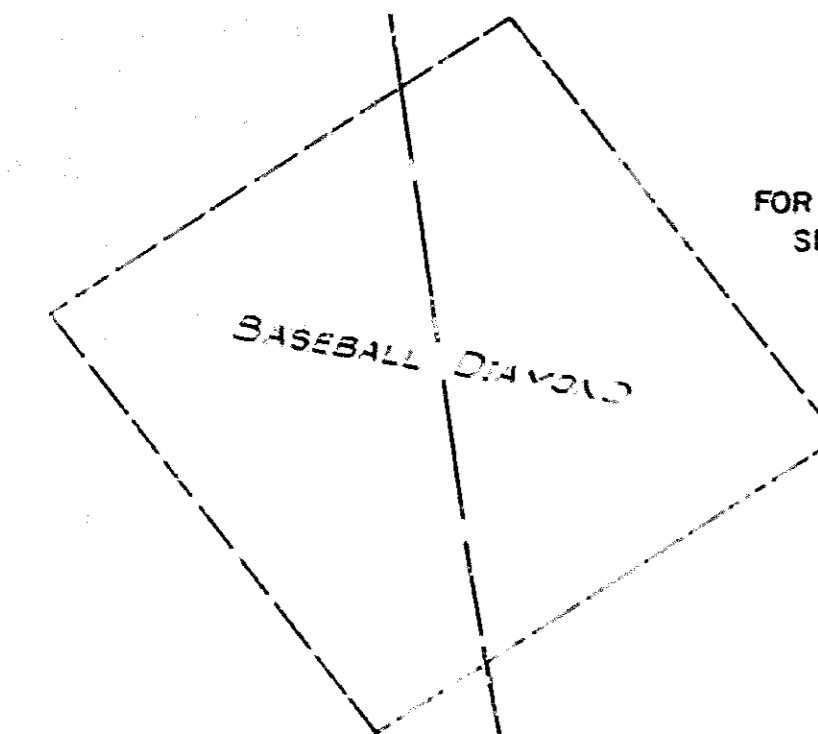
STEEL BEAM HIGHWAY GUARD TYPE SS
DOUBLE FACED
STA. 10+96 RELOC. RTE. I-A TO STA. 18+90 RELOC. RTE. I-A

ELECTRICAL DETAILS
SEE THIS SHEET
SEE SHEET NO.19,22,23

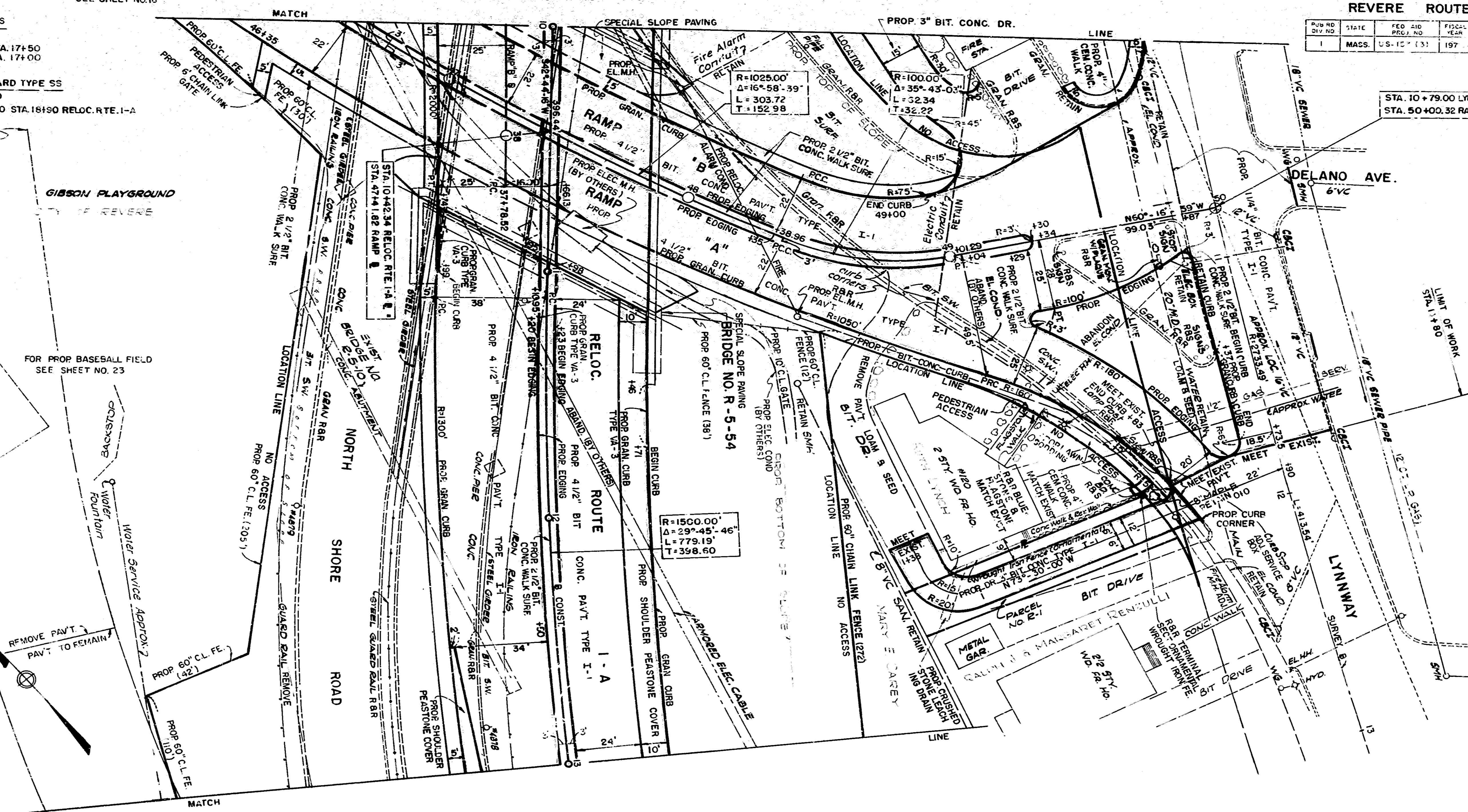
TRAFFIC SIGNAL CONDUIT
SEE SHEET NO.16

TEMP. DETOUR ROAD
SEE SHEET NO. 5

FOR PROP. BASEBALL FIELD
SEE SHEET NO. 23

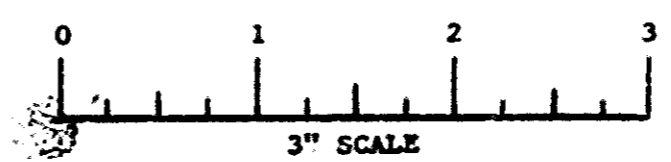
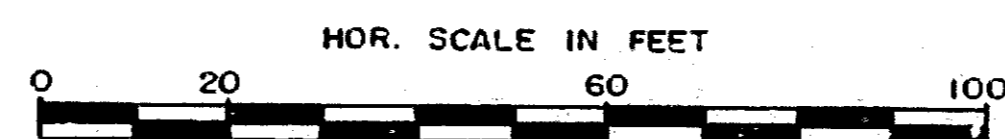


GIBSON PLAYGROUND



STA. 10+79.00 LYNNWAY R =
STA. 50+00.32 RAMP R

CONT. ON SHT. NO. 10



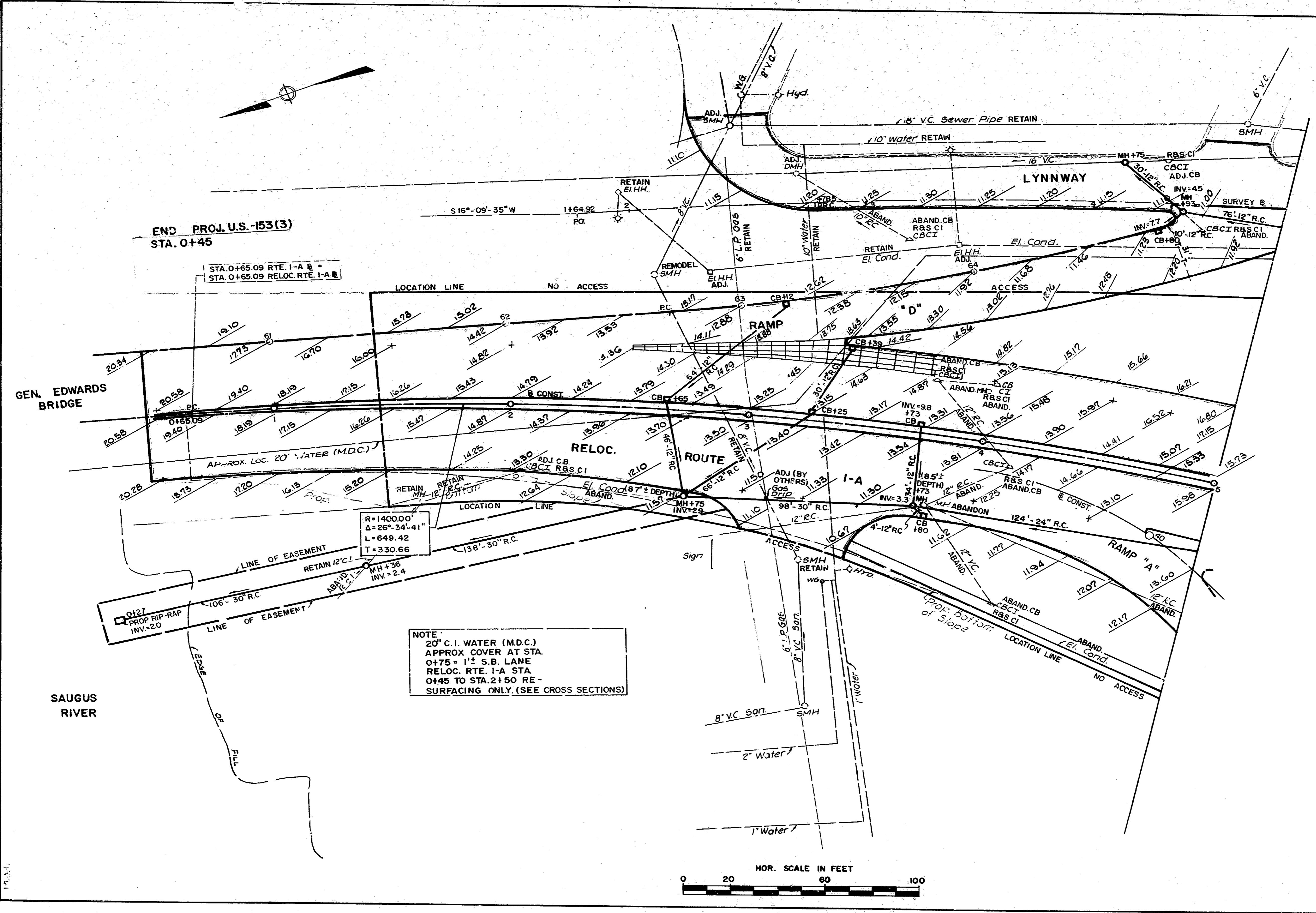
FOR PROFILE SEE SHEET NO.11,12

REVERE ROUTE I-A

PUB. DIV. NO.	STATE	FED. AID PROJ. NO.	FISCAL YEAR	SHEET NO.	TOTAL SHEETS
1	MASS.	US-153 (3)	197	13	15

DRAINAGE, GRADING

7053

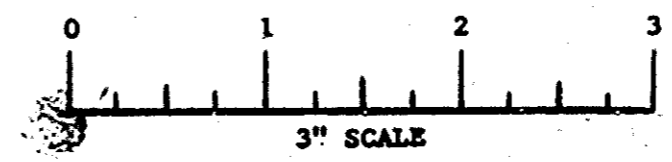
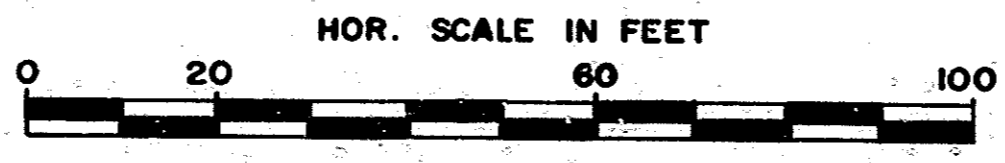


END PROJ. U.S.-153(3)
STA. 0+45

STA. 0+65.09 RTE. I-A R =
STA. 0+65.09 RELOC. RTE. I-A R

R=1400.00'
Δ=26°-34'-41"
L=649.42
T=330.66

NOTE:
20' C.I. WATER (M.D.C.)
APPROX. COVER AT STA.
0+75 = 1'± S.B. LANE
RELOC. RTE. I-A STA.
0+45 TO STA. 2+50 RE-
SURFACING ONLY. (SEE CROSS SECTIONS)

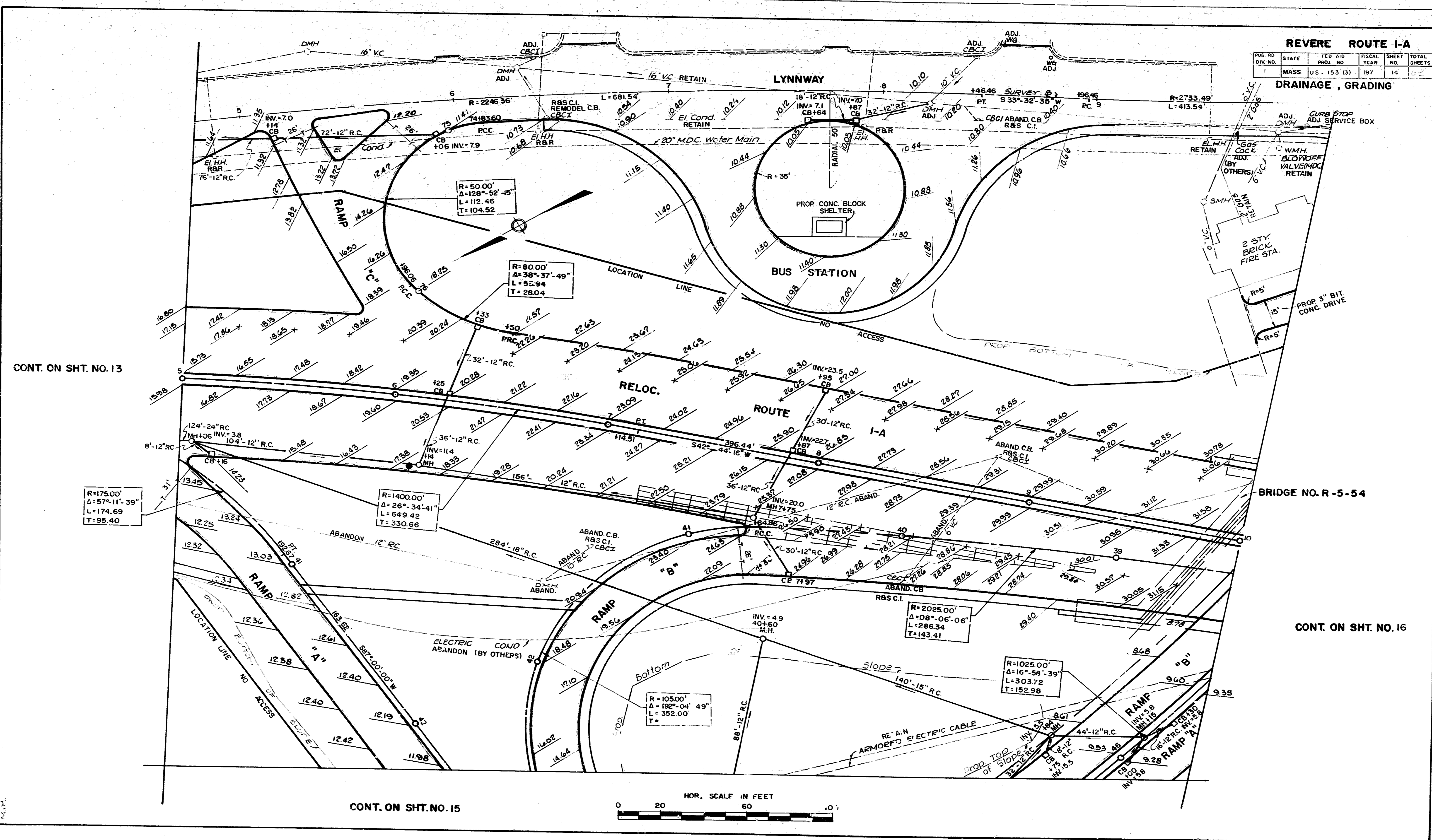


CONT. ON SHT. NO. 14

REVERE ROUTE I-A

PUB. RD. DIV. NO.	STATE	FED. AID PROJ. NO.	FISCAL YEAR	SHEET NO.	TOTAL SHEETS
1	MASS.	U.S. 153 (3)	197	14	

DRAINAGE, GRADING



CONT. ON SHT. NO. 13

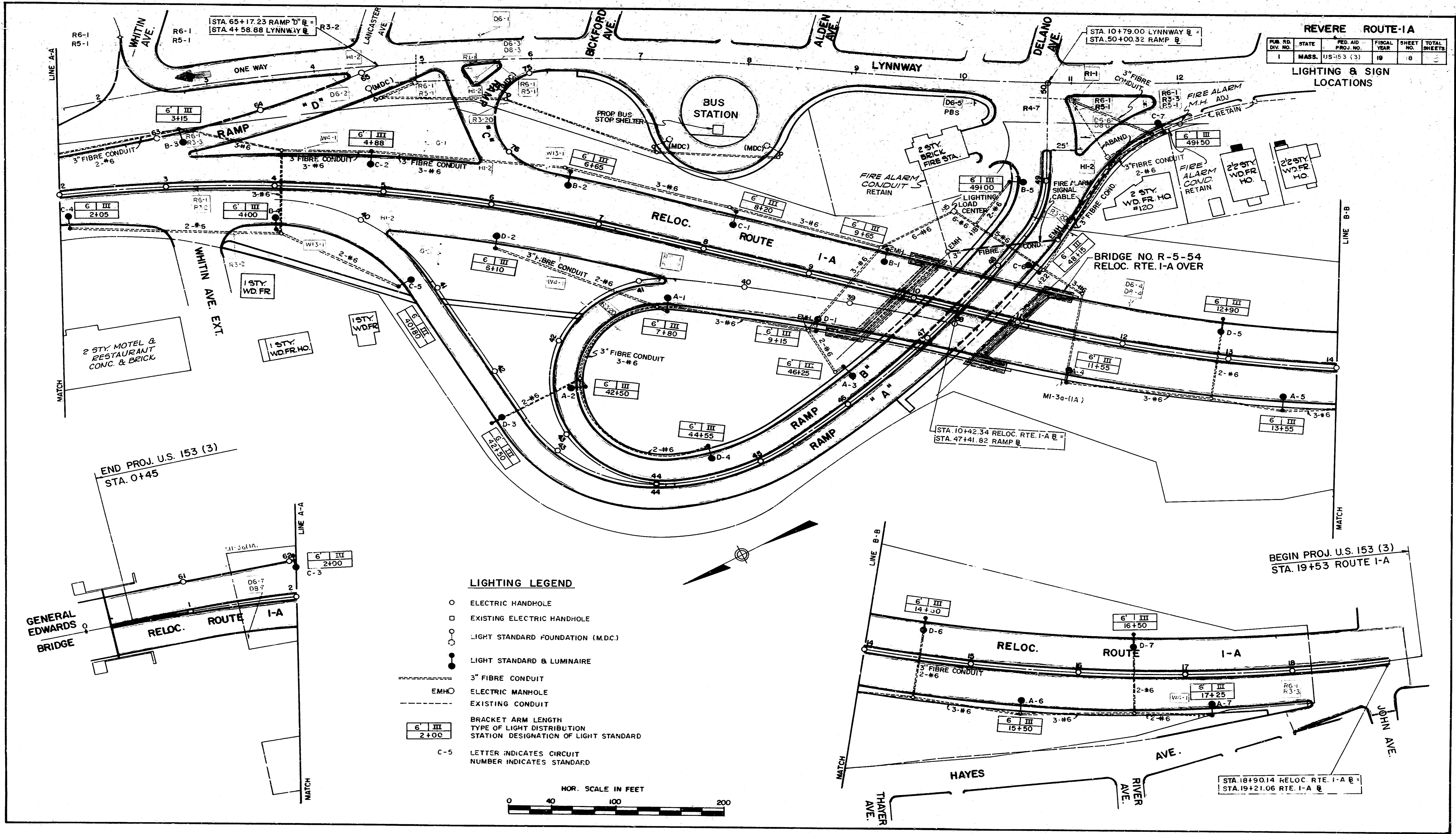
CONT. ON SHT. NO. 16

CONT. ON SHT. NO. 15

REVERSE ROUTE-1A

PUB. NO.	STATE	FED. AID PROJ. NO.	FISCAL YEAR	SHEET NO.	TOTAL SHEETS
1	MASS.	US-153 (3)	19	18	5

LIGHTING & SIGN LOCATIONS



END PROJ. U.S. 153 (3)
STA. 0+45

BEGIN PROJ. U.S. 153 (3)
STA. 19+53 ROUTE 1-A

LIGHTING LEGEND

- ELECTRIC HANDHOLE
- EXISTING ELECTRIC HANDHOLE
- LIGHT STANDARD FOUNDATION (M.D.C.)
- LIGHT STANDARD & LUMINAIRE
- 3" FIBRE CONDUIT
- - - EMHO
- - - ELECTRIC MANHOLE
- - - EXISTING CONDUIT
- BRACKET ARM LENGTH
- TYPE OF LIGHT DISTRIBUTION
- STATION DESIGNATION OF LIGHT STANDARD
- C-5 LETTER INDICATES CIRCUIT NUMBER
- 5 NUMBER INDICATES STANDARD

